

XX-720G

PROVIDES THE DATA THAT COUNTS FOR NETWORK MONITORING

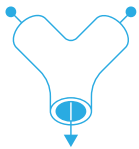
AGGREGATION, REPLICATION, ADVANCED FILTERING, LOAD BALANCING

The Profitap XX-720G is a high-density Network Packet Broker, bringing you the power and flexibility of network traffic management with a total throughput of 720 Gbps in a single 19" rack unit.

The XX-720G features 48 SFP+ (1/10 Gbps) and 6 QSFP+ ports (40 Gbps) providing aggregation, replication, filtering and load balancing in very high bandwidth port monitoring and analysis scenarios.

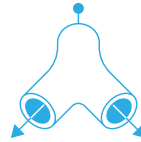


KEY FEATURES



AGGREGATION

Aggregate traffic coming from multiple incoming links



REPLICATION

Replicate traffic to multiple monitoring and security tools



FILTERING

Only send actionable data to each of the connected tools



LOAD BALANCING

Balance traffic over multiple monitoring and security tools

USE CASES

- Balance traffic over multiple monitoring and security tools: allows incoming traffic to be distributed evenly and dynamically across multiple output ports.
- Aggregate multiple traffic streams into higher speed links.
- Replicate traffic to multiple monitoring and security tools: outputs copies of incoming traffic to multiple output ports.
- Filter specific parts of the traffic based on a wide array of allow and drop rules to ensure the appropriate traffic is sent to the appropriate tools.

TECHNICAL SPECIFICATIONS

CONNECTORS

48 x SFP+ ports
6 x QSFP+ ports
1 x RJ45 (serial) out-of-band management
1 x mini-USB console (RS232)

LEDs

1 x Fan
1 x System status
1 x PSU1 status
1 x PSU2 status

ACCESSORIES

2 x 550 W, 80+ Platinum, 100–240 VAC, 50–60 Hz
or
2 x 800 W, -40V--60 VDC

WEIGHT

8.7 kg — 19.18 lb

COMPLIANCE

RoHS — CE — FCC

DIMENSIONS (WxDxH)

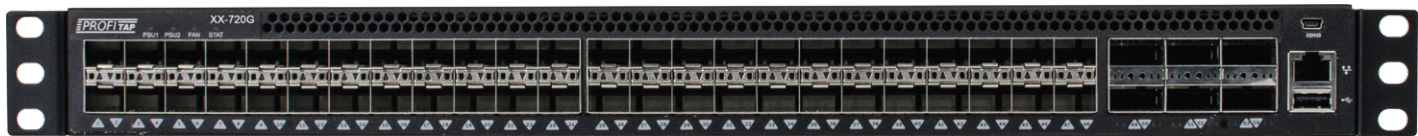
440 x 410 x 44 mm — 17.32 x 16.14 x 1.73 in

HIGHLIGHTS

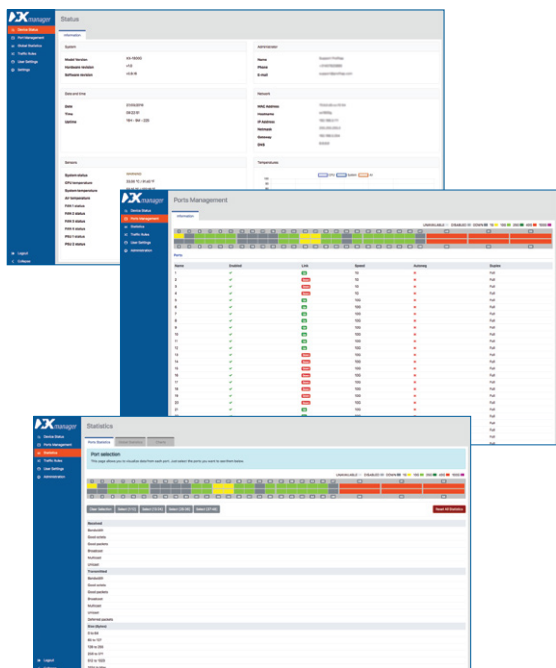
- Local and remote management (CLI, SSH, GUI, SNMP, Syslog)
- RESTful API support
- Layer 2-4 filtering
- Flexible role-based management access
- TACACS+ authentication
- Centralized authentication via Profitap Supervisor (local users, TACACS+, RADIUS)
- Redundant, hot-swappable, Platinum efficiency PSUs and fan modules
- High-density, 720Gbps throughput in a 1U footprint
- Supports 1G, 10G, 40G
- Supports 4 x 10G splits on 40G ports via fanout cables

ORDER REFERENCES

PORT LICENSE	AC (2 x 550 W, 100-240 VAC) PSU	DC (2 x 800 W, -40V--60 VDC) PSU
24 x 10GbE + 2 x 40GbE	XX-720G-242-AC	XX-720G-242-DC
48 x 10GbE + 6 x 40GbE	XX-720G-486-AC	XX-720G-486-DC



XX-Manager is a web-based interface integrated in every XX-720G unit, allowing easy access to the configuration and monitoring of XX-720G settings and behavior from any OS or platform.



DEVICE STATUS

Device status offers a quick overview of operational statistics related to the packet broker hardware.

PORT MANAGEMENT

Port management offers instant overview of port status and speed. Users control the configuration of all SFP modules, where each module offers additional information in the specific status section.

PORT STATISTICS

Port statistics displays and monitors the statistics counter for each of the device interfaces.